

Webinar: Development and Evolution of a Sustainable City and Community

Sustainability Envisioning 2030-2050 for Hong Kong

Ms Joyce Chow

Senior Project Manager, Centre for Civil Society and
Governance, The University of Hong Kong

Remarks: This material/event is funded by the Professional Services Advancement Support Scheme of the Government of the Hong Kong Special Administrative Region. Any opinions, findings, conclusions or recommendations expressed in this material/any event organised under this project do not reflect the views of the Government of the Hong Kong Special Administrative Region or the Vetting Committee of the Professional Services Advancement Support Scheme.





共凝滙創 · 永續社區

Social Innovation for Sustainability

Sustainability Visions for Hong Kong 2030-2050 and the Community Awareness on Social Entrepreneurship

Ms Joyce Chow

26 November 2020



CENTRE FOR CIVIL SOCIETY AND GOVERNANCE

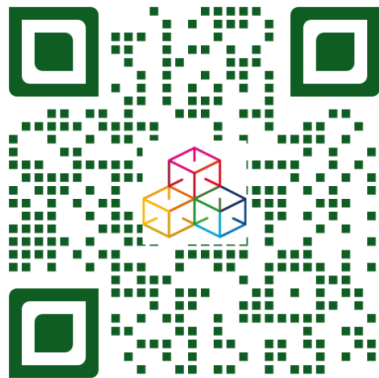
THE UNIVERSITY OF HONG KONG

About Centre for Civil Society and Governance (公民社會與治理研究中心)

Under Faculty of Social Sciences; affiliated with Department of Politics and Public Administration

Mission

“ to contribute to the attainment of a sustainable society through forging community-based, innovative solutions to inform policy deliberation and action, to raise people’s awareness of the importance of sustainability, to facilitate collective action in and across sectors, and to foster stakeholder engagement.”



Our Three Labs




CENTRE FOR CIVIL SOCIETY AND GOVERNANCE
THE UNIVERSITY OF HONG KONG



POLICY FOR SUSTAINABILITY LAB
CENTRE FOR CIVIL SOCIETY AND GOVERNANCE

Aspires to understand and generate social-ecological synergy as a way to promote **social and environmental sustainability**



SOCIAL ENTREPRENEURSHIP AND CIVIC ACTION LAB
CENTRE FOR CIVIL SOCIETY AND GOVERNANCE

Strives to understand and foster community based **collective action** and commoning as a vehicle for building and utilizing **human ingenuity and building social capital**



NONPROFITS AND PHILANTHROPY LAB
CENTRE FOR CIVIL SOCIETY AND GOVERNANCE

Seeks to enhance the **capacity and governance of the nonprofit and philanthropic sector** as a means to attain social impact



ACADEMY FOR
**Sustainable
Communities**
永續社區學院

Themes and Expertise

Major Themes



Rural Sustainability



Social Entrepreneurship for Sustainability



Social Innovation



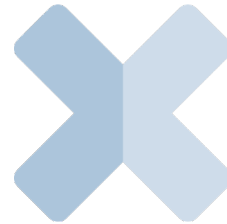
Collaborative Governance



Nonprofit Management



Corporate Sustainability



Area of Expertise



Community Engagement



Community Revitalization



Policy Research



Incubation



Sustainability Assessment



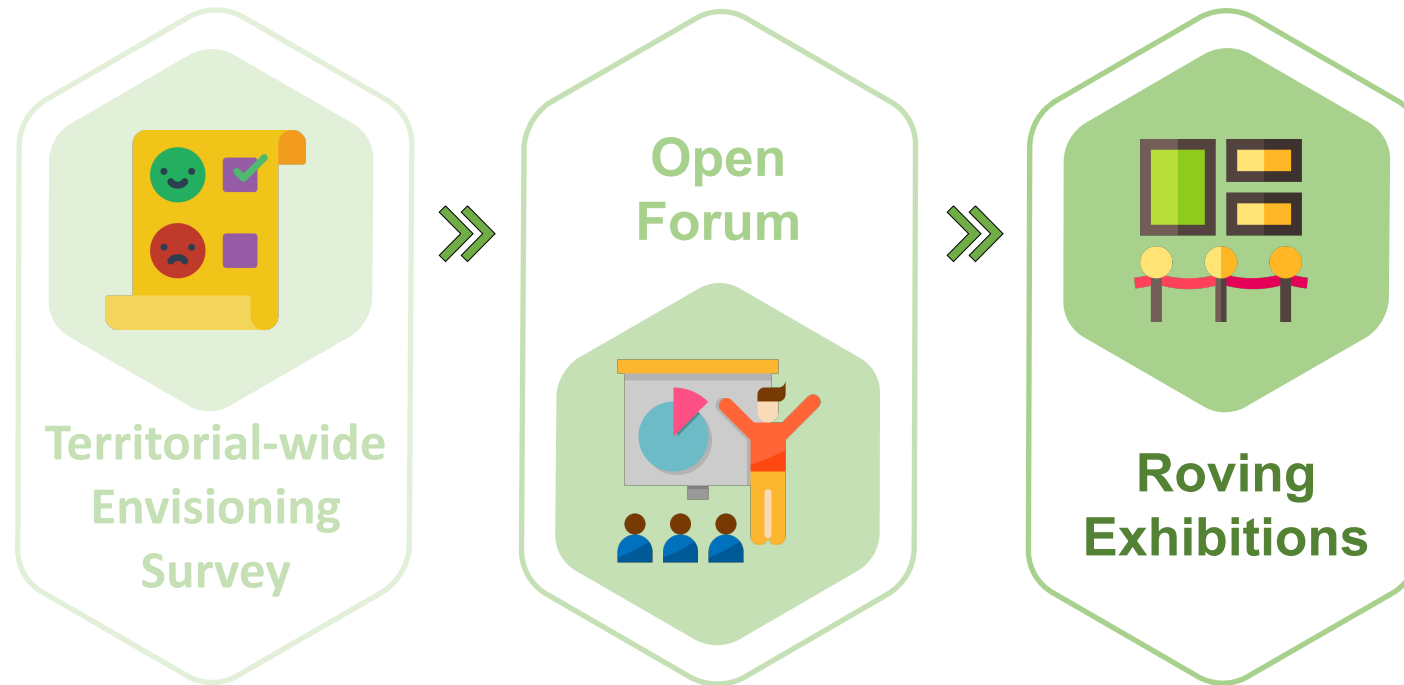
Training & Education for Sustainability



**Social Innovations for
Sustainable Communities**
滙創永續計劃

To build social entrepreneurship for the promotion and attainment of sustainability, by empowering the **crowdsourcing of ideas and actions** from a corps of intergenerational “sustainability catalyzers”

Community Envisioning for Sustainability



- 1 A list of **sustainability visions** for Hong Kong 2030 – 2050
- 2 **Level of awareness** of social entrepreneurship in Hong Kong
- 3 Factors of **social entrepreneurial intent** in Hong Kong

「香港展望2030-2050永續發展願景及社區對社會企業的認識」

Sustainability Visions for Hong Kong 2030-2050 and Community Awareness on Social Entrepreneurship

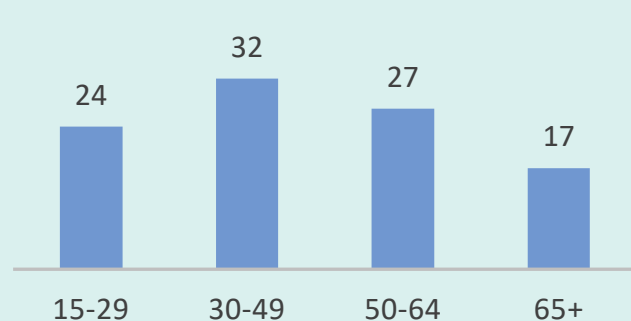
進行問卷調查時間 Data Collection Period:

2019年6月至8月 June – August 2019

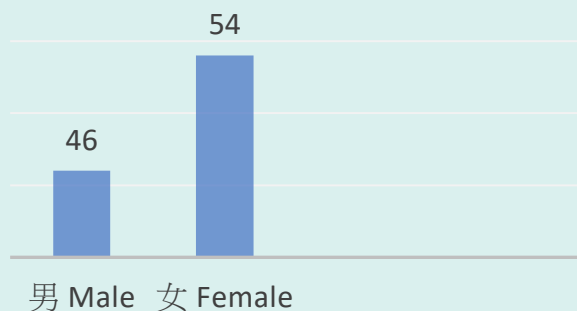
抽樣調查樣本 Sample Size:

1,100

年齡 Age Distribution

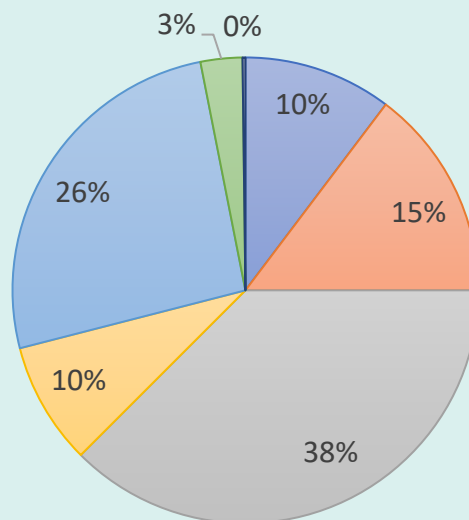


性別 Gender Distribution



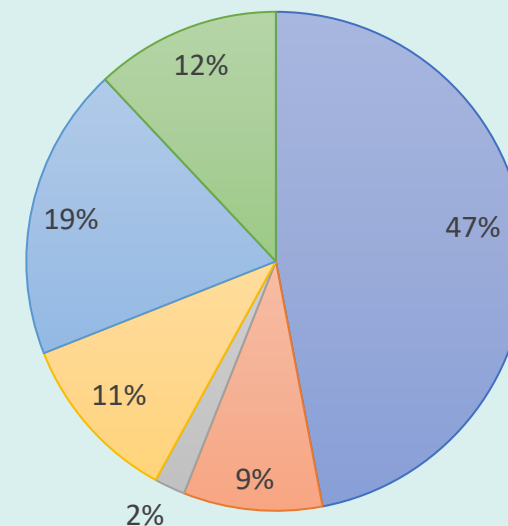
教育程度 Education Level

- 小學或以下 Primary and below
- 初中 Lower secondary
- 高中 Upper secondary
- 專上非學位 Non-degree Post-Secondary
- 專上學位 Bachelor's degree
- 碩士學位 Master's degree
- 博士學位 Doctorate degree



就業狀況 Employment Status

- 全職 Full-time
- 兼職 Part-time
- 失業 Not looking
- 學生 Student
- 退休 Retired
- 料理家務者 Homemaker



共凝滙創 · 永續社區

Social Innovation for Sustainability

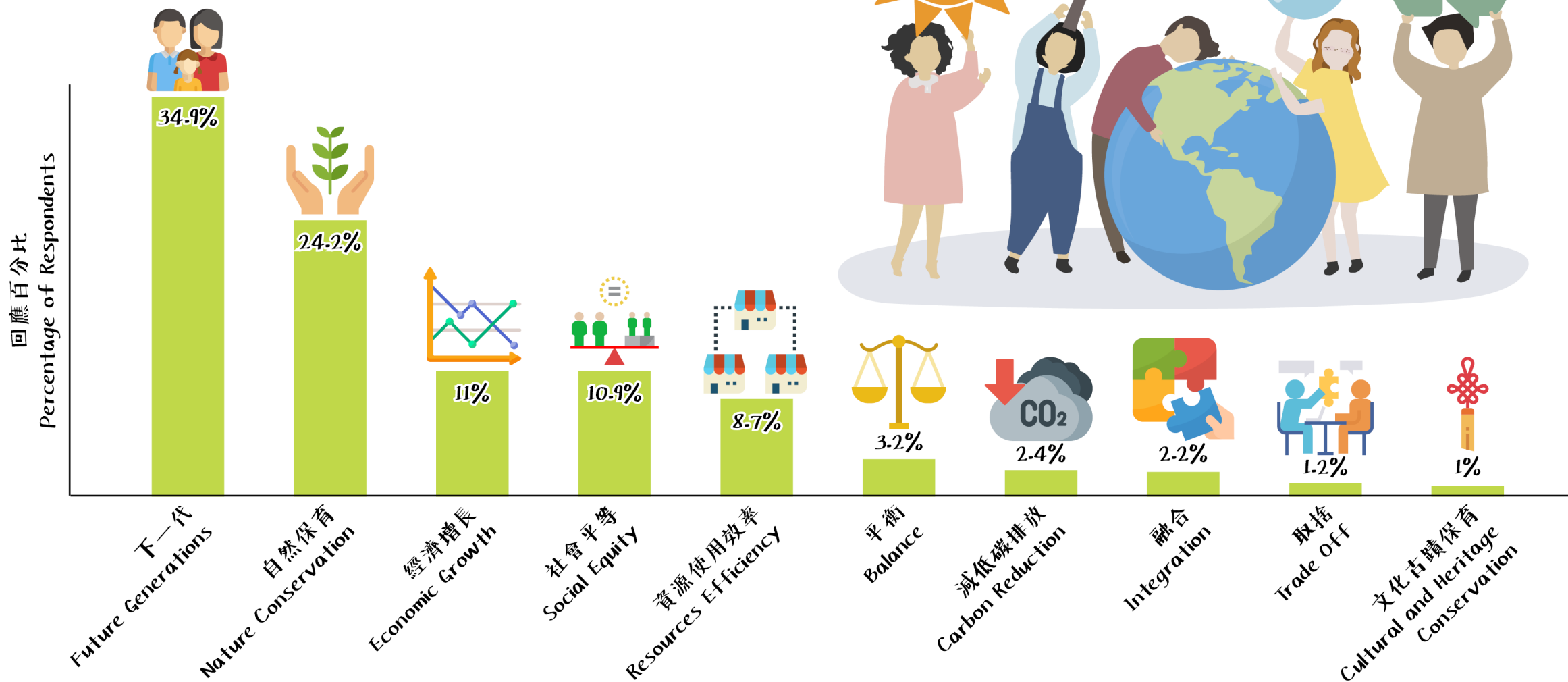
- 第一部分：永續發展構想
Part 1 : Sustainability Envisioning
- 第二部分：香港『社會企業』
Part 2 : Social Entrepreneurship in Hong Kong

共凝滙創 · 永續社區

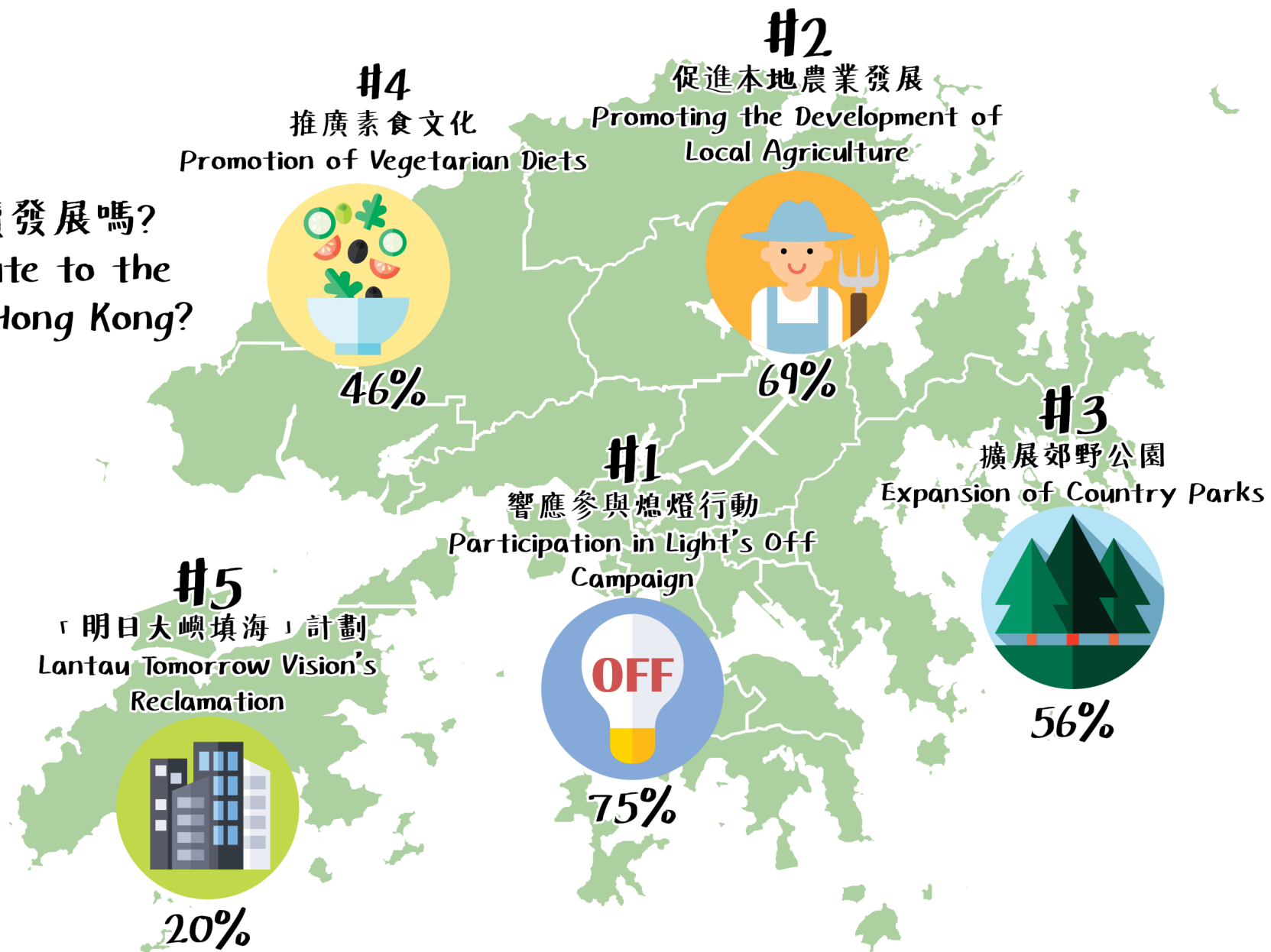
Social Innovation for Sustainability

第一部分：永續發展構想
Part 1 : Sustainability Envisioning

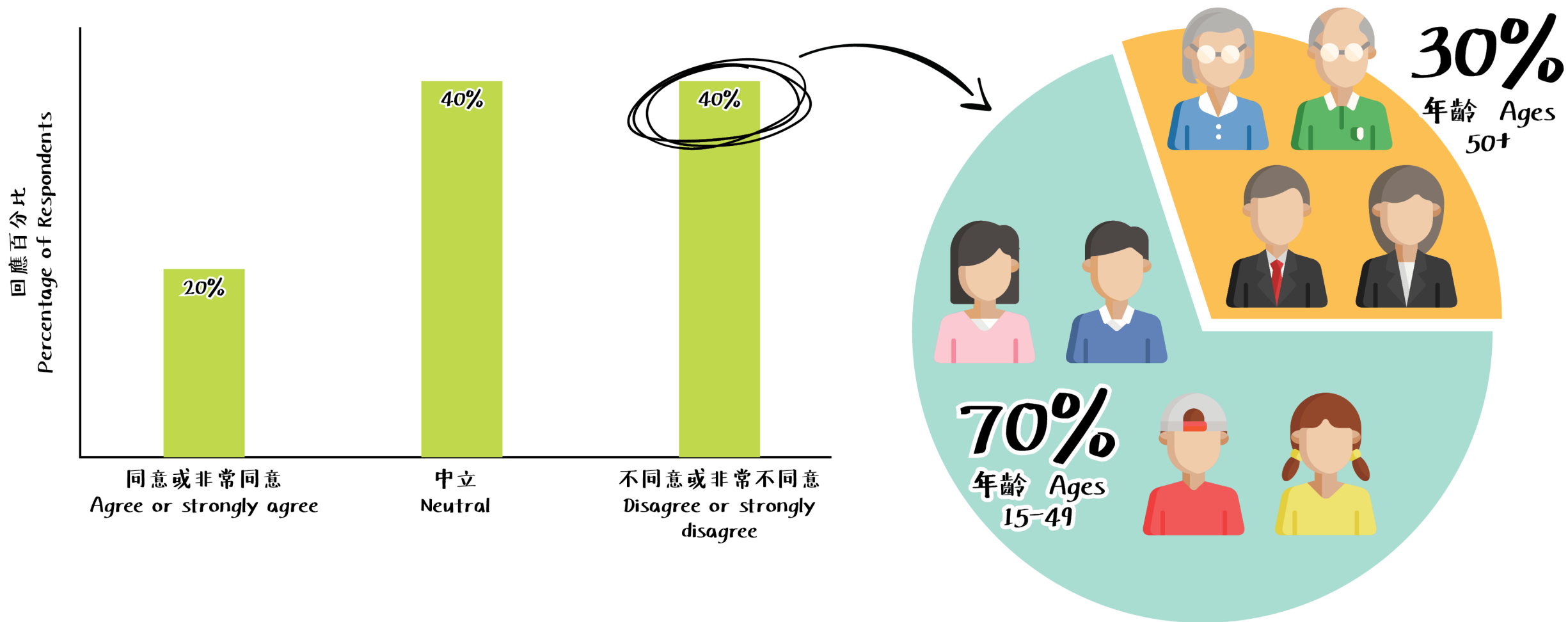
1. 當提到「永續發展」時，您會想到甚麼呢？ What comes to your mind when we mention "sustainable development" or "sustainability"?



2. 以下措施有助於香港的永續發展嗎?
Do these initiatives contribute to the sustainable development of Hong Kong?



3. 與其他城市比較，您認為香港在永續發展方面做得比較好？ Do you think Hong Kong is more sustainable when compared to other cities?



4. 您認為實現香港永續發展最重要的持份者是？

Which do you believe are the most important stakeholder groups in achieving sustainability in Hong Kong?



政府/監管機構
Government/
Regulator

88%



普羅大眾
General public

63.5%



企業(例如上市公司)
Corporates
(e.g. listed companies)

49%



私人基金及慈善家
Private foundations
and philanthropists

16.5%



專業團體及協會
Professional bodies
and associations

10.5%



政府/監管機構
Government/
Regulator

79%



普羅大眾
General public

37.5%



企業(例如上市公司)
Corporates
(e.g. listed companies)

37%



專業團體及協會
Professional bodies
and associations

31.5%



私人基金及慈善家
Private foundations
and philanthropists

25%

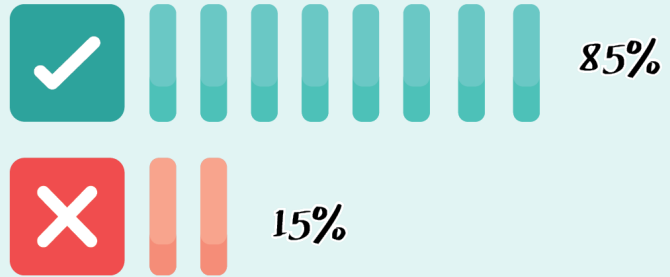


共凝滙創 · 永續社區

Social Innovation for Sustainability

第二部分：香港「社會企業」
Part 2 : Social Entrepreneurship in Hong Kong

5. 您有聽過「社企」這個名稱嗎?
Have you heard of the term "Social Enterprise" before?



6. 您有聽過「世界自然基金會」這個機構嗎?
Have you heard of the WWF?



7. 「世界自然基金會」是「社企」嗎?
Is the WWF a Social Enterprise?

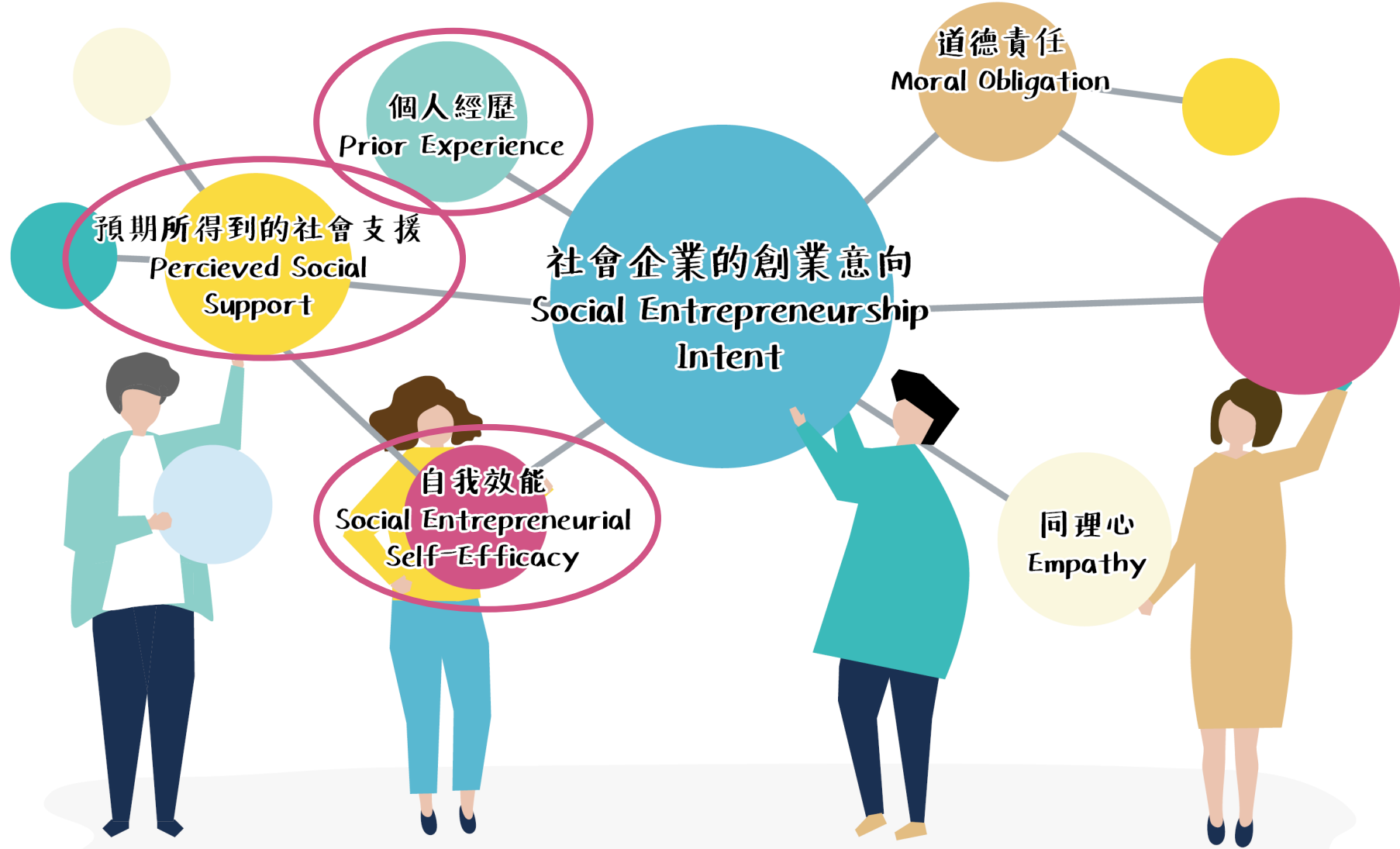


40% 不確定!
Not Sure!

30% 是「社企」!
Said YES!



8. 社會企業意向的因素 Factors of Social Entrepreneurship Intent



9.

有間餐廳售賣一個飯盒價值\$50，如果這間餐廳轉用永續食材，成本會上升。

您願意額外付出多少錢來買這個飯盒呢？

A restaurant near you is selling a lunch box you enjoy for \$50 each. The restaurant wants to switch to using sustainable ingredients, but they cost more to produce. How much are you willing to pay for the same lunch box that you enjoy?



37% 不願意加錢
Not willing to pay more



63% 願意多付10-50%
Willing to pay 10-50% more



10.

有間餐廳售賣一個飯盒價值\$50，如果這間餐廳想轉為「社企」，聘請傷健人士，成本會上升。

您願意額外付出多少錢來買這個飯盒呢？

A restaurant near you is selling a lunch box you enjoy for \$50 each. The restaurant wants to switch to a social enterprise hiring people with disabilities, but the operation cost will increase. How much are you willing to pay for the same lunch box that you enjoy?



32% 不願意加錢
Not willing to pay more

68% 願意多付10-50%
Willing to pay 10-50% more

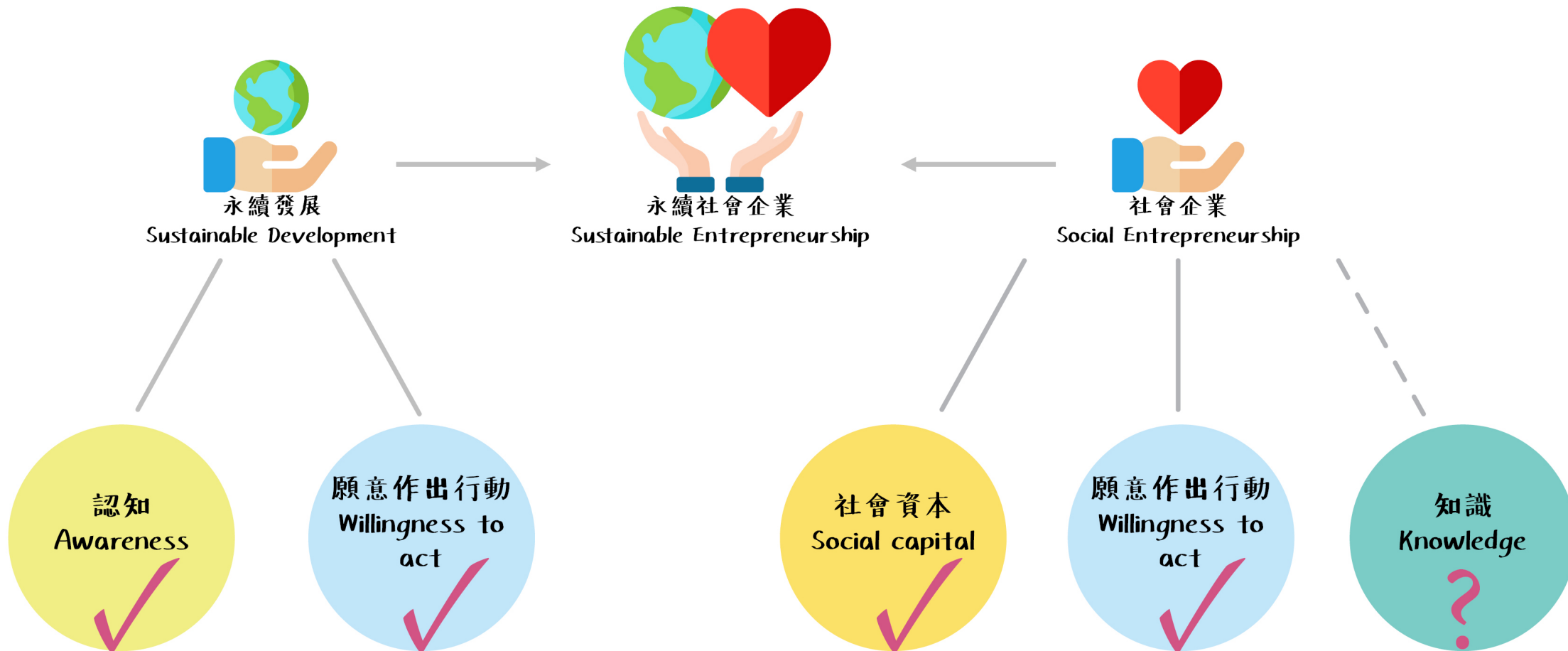


11.

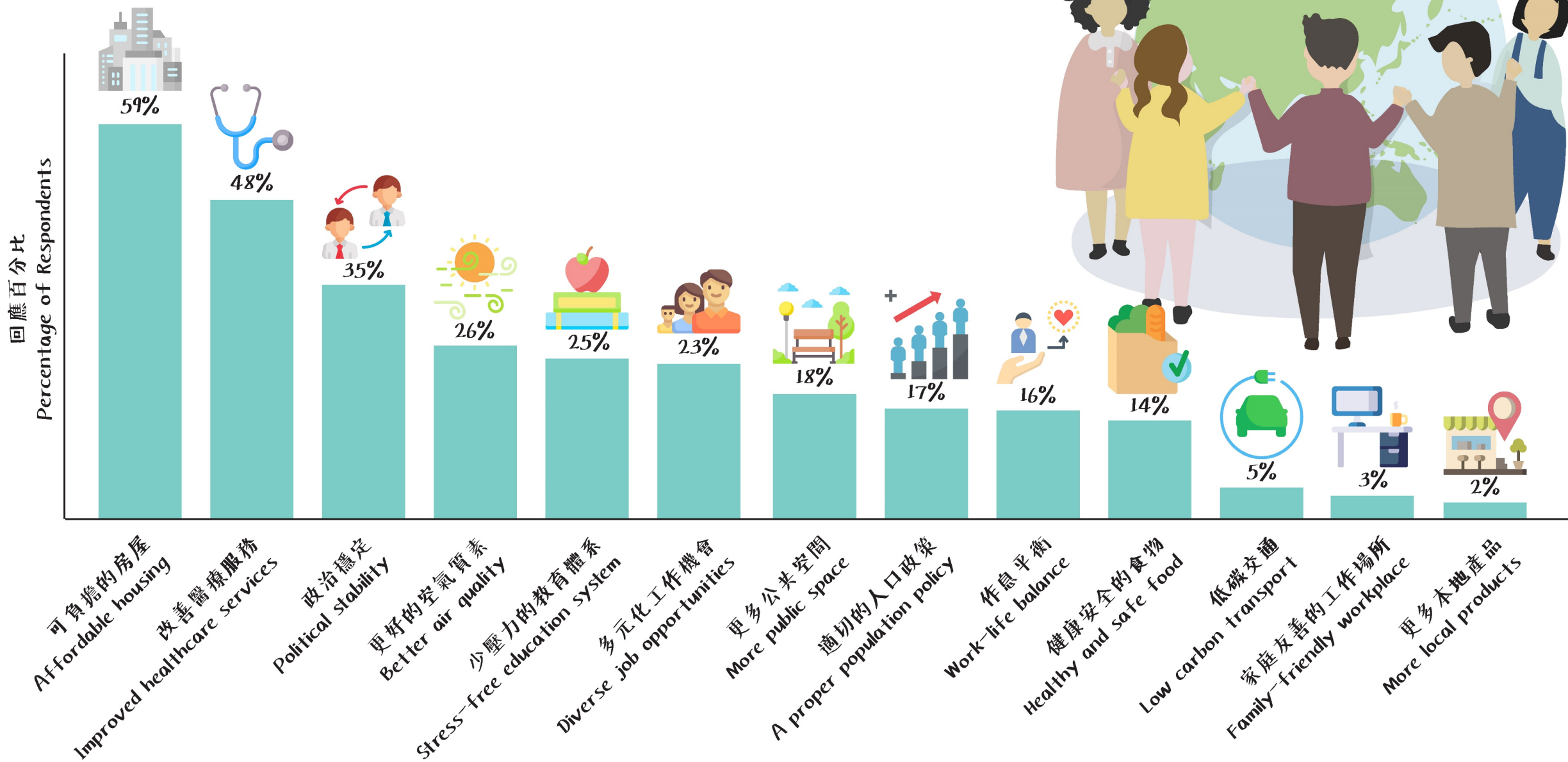


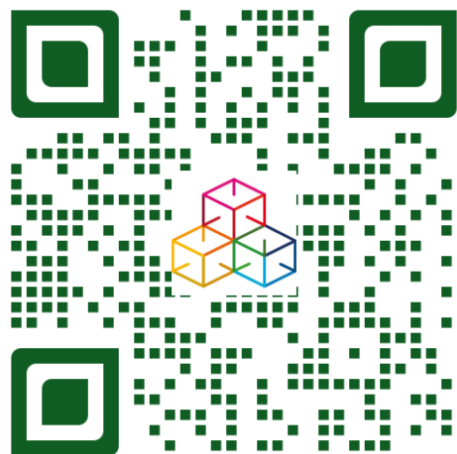
永續發展與社會企業

Sustainable Development and Social Entrepreneurship



12. 2050年香港最需要的是? What does Hong Kong need the most in 2050?





Thank You



CENTRE FOR CIVIL SOCIETY AND GOVERNANCE

THE UNIVERSITY OF HONG KONG



joycewc@hku.hk